

IBS

PRECAST FENCING



WHY USE OUR IBS PRECAST FENCING?

- ✓ **Easy and Quick Installation**
- ✓ **Less Labour**
- ✓ **Cost Saving**

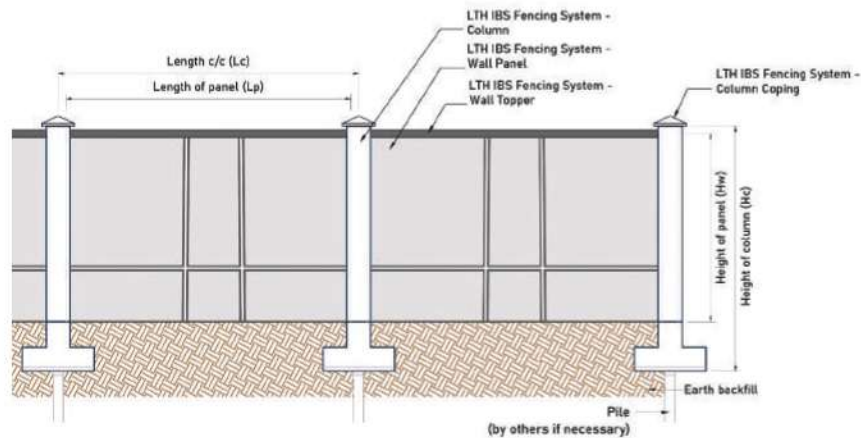
PRECAST CONCRETE MANUFACTURER IN MALAYSIA

www.lthgroup.net

LTH IBS Fencing

6 ft

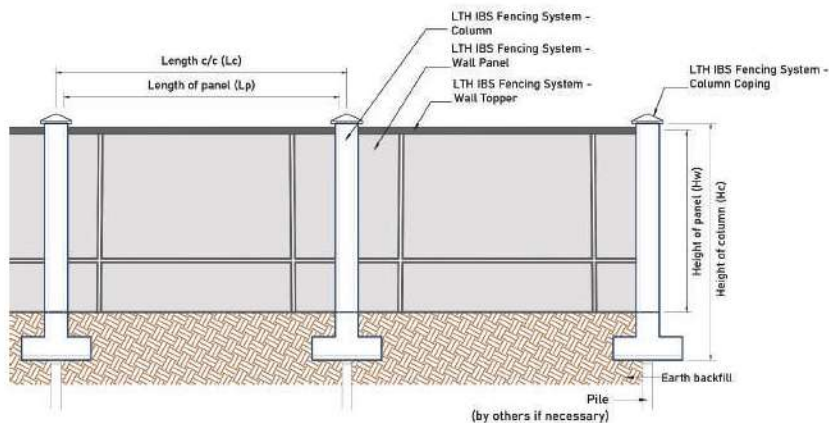
Panel Height



Height of panel (Hw)		Length of panel (Lp)		Length c/c (Lc)	Thickness of panel		Height of column (Hc)		Weight of panel (approx.)
foot	mm	foot	mm	mm	inch	mm	foot	mm	ton
6	1829	10	3048	3251	4	102	8	2438	1.365

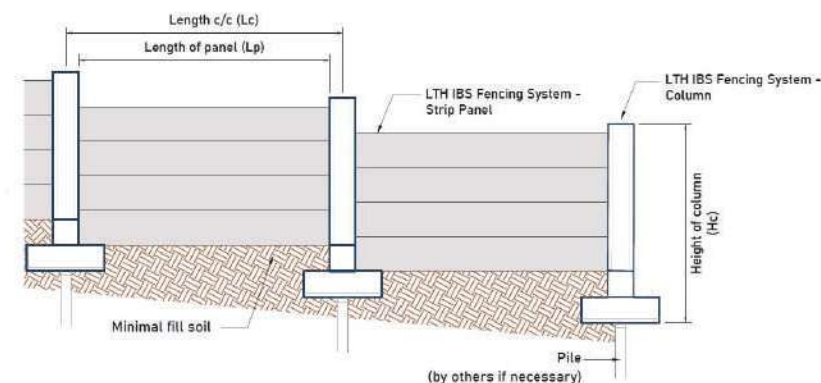
8 ft

Panel Height



Height of panel (Hw)		Length of panel (Lp)		Length c/c (Lc)	Thickness of panel		Height of column (Hc)		Weight of panel (approx.)
foot	mm	foot	mm	mm	inch	mm	inch	mm	ton
8	2438	10	3048	3251	4	102	132	3353	1.819

Strip Panel



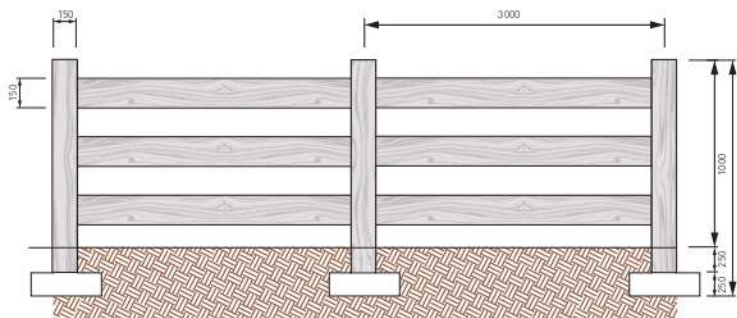
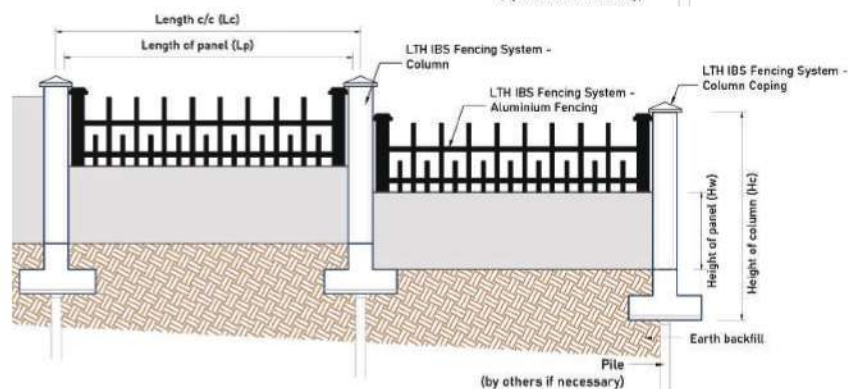
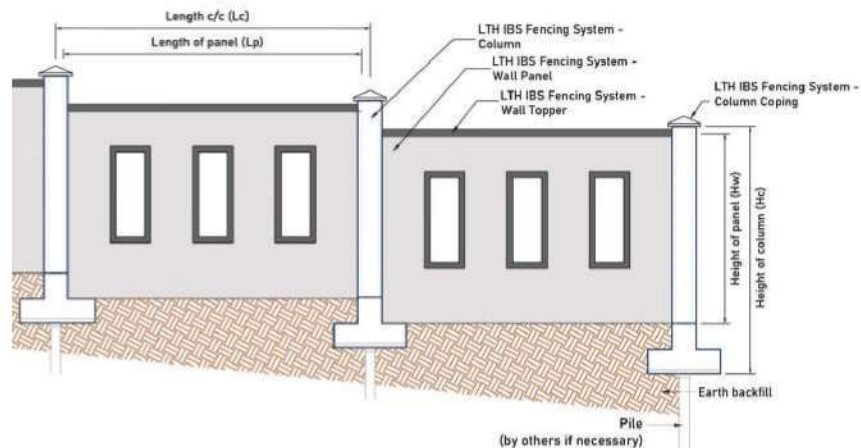
Length of strip panel (Lsp)	Width of strip panel (Wsp)	Length c/c (Lc)	Thickness of strip panel	Height of column (Hc)	Weight of strip panel (approx.)
mm	mm	mm	mm	mm	ton
3000	400	3203	100	2337	0.288

Info

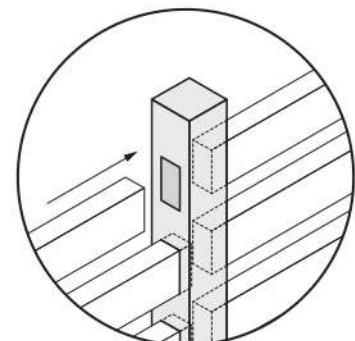
LTH Strip Panel is suitable at rise and fall of the terrain surface. Easy for transport and lift the strip panel due to its weight. Installation will be easier too.

LTH IBS Fencing

Special
Design
Panel



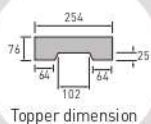
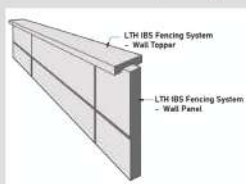
IBS SPILT RAIL FENCING



INSTALLATION

Add-on Accessories

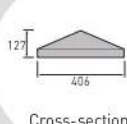
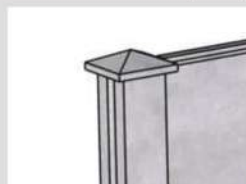
Wall Coping



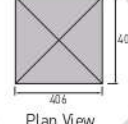
Topper dimension

Info
Wall topper is attached to the top of wall panel to make as decorative and additional value to the landscape.

Column Coping

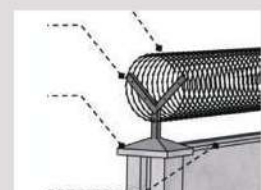


Cross-section View

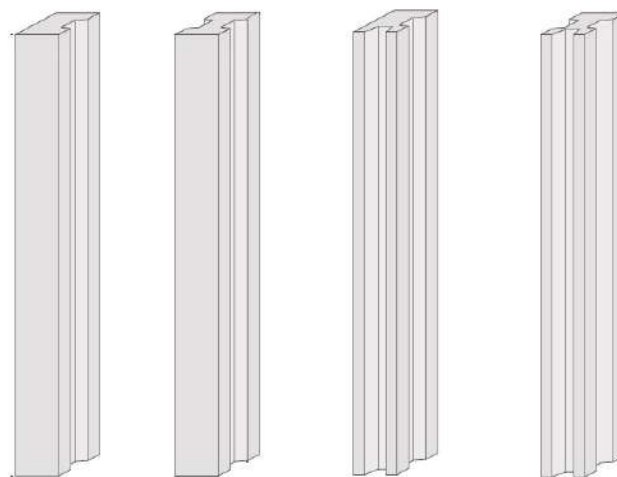
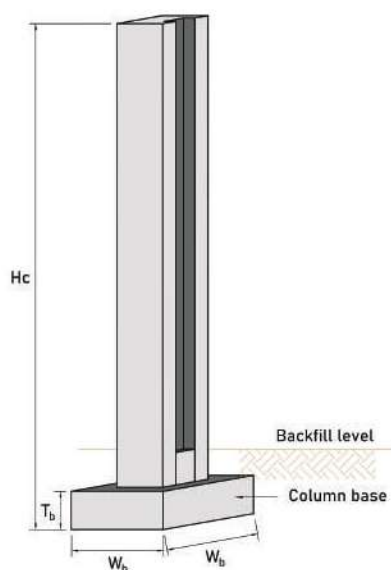


Plan View

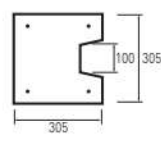
Y Angle Column Coping



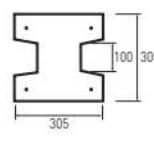
Column Details



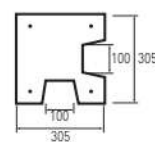
Height of column H_c		Thickness of base T_b		Width of base W_b	
inch	mm	inch	mm	inch	mm
96	2438	10	254	24	610
132	3353	10	254	24	610



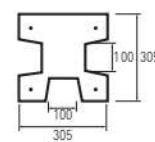
Type U



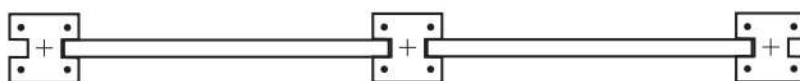
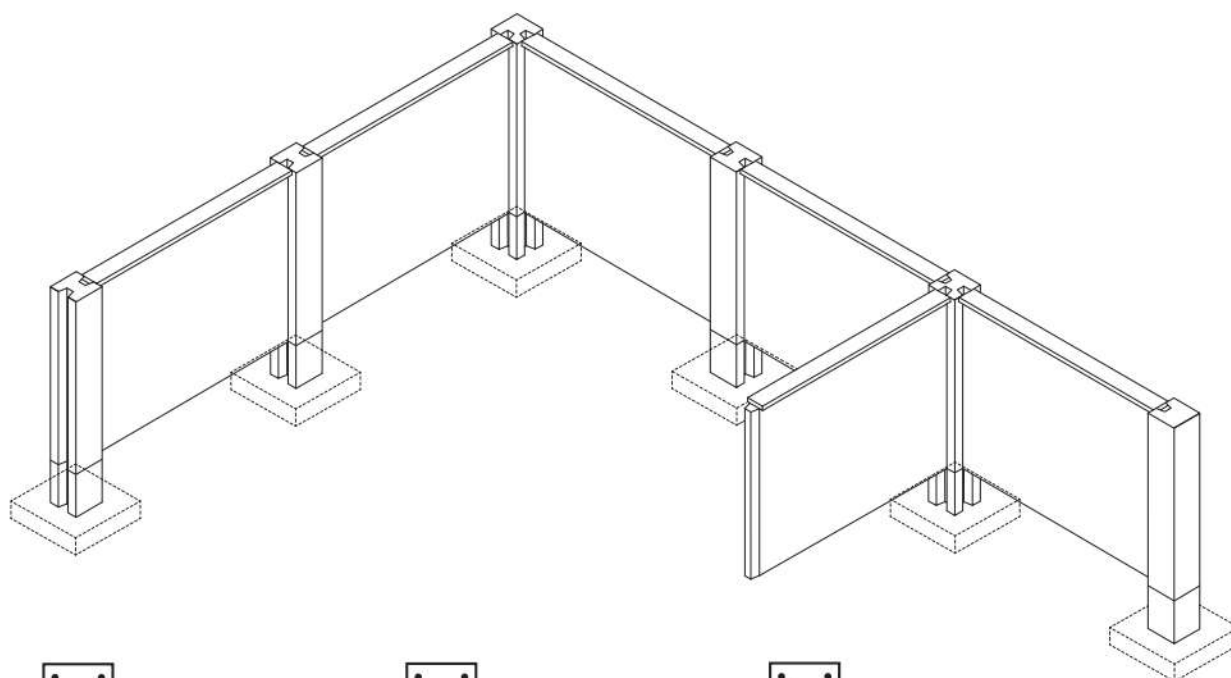
Type H



Type L



Type T



TOP VIEW

Installation

Completed in
20 days
for 20 acres land

LTH[®]
GROUP



1

Foundation Excavation & Casting of Concrete Foundation

*Suggested Grade of Concrete: G25
*Suggested Concrete Thickness: 300mm

2

Place Footing & Column

*The distance of each column should be based on the length of the wall panels.



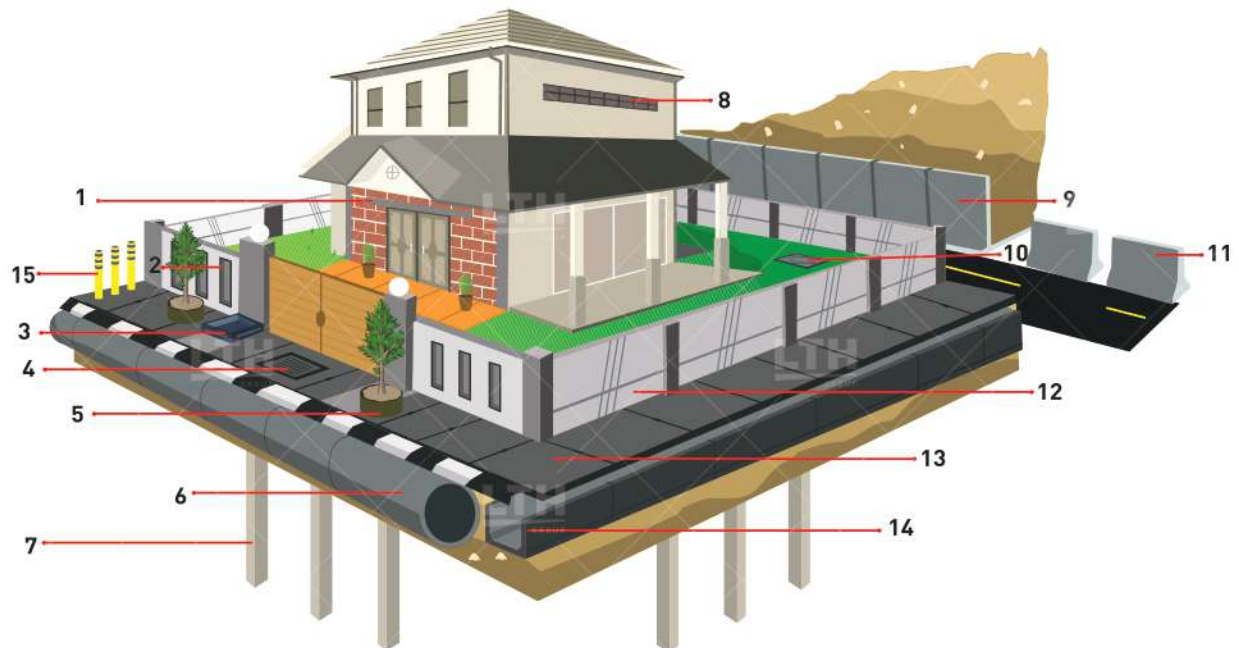
3

Assemble Wall Panel

*Place wall panel in between the columns.
*Add-on accessories like wall coping, column coping and Y angle column coping are available as decorative and additional value to the landscape.



INDUSTRIAL & RESIDENTIAL PROJECT

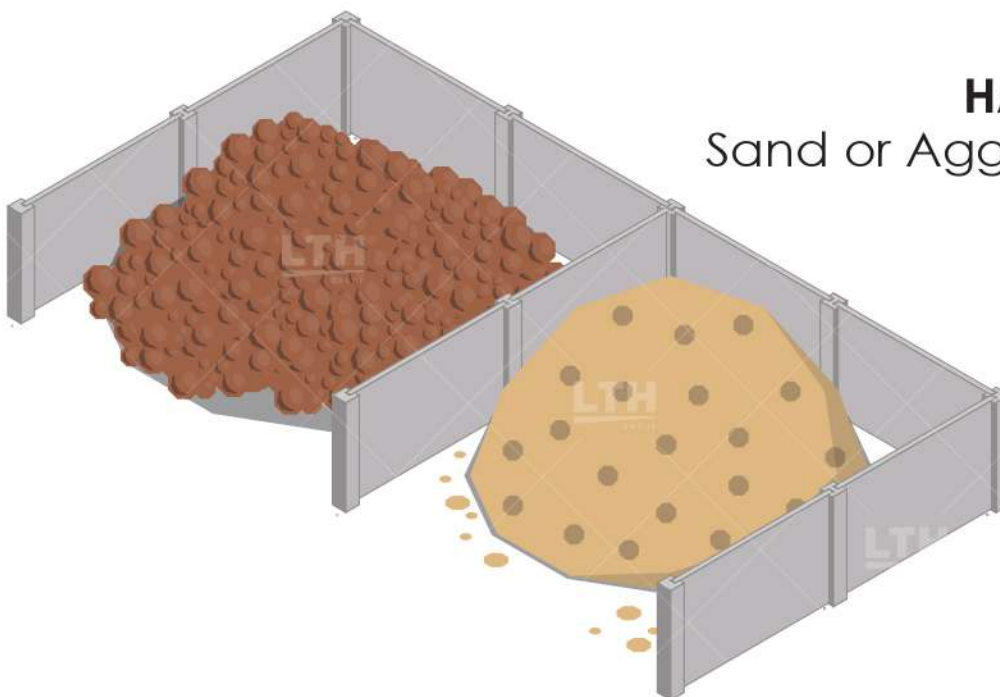


LTH CONCRETE PRODUCTS

- 1. CONCRETE POLE
- 2. FENCING POLE
- 3. DUSTIN TRAY
- 4. DRAIN MANHOLE COVER
- 5. PLANT CONCRETE RING

- 6. CONCRETE PIPE CULVERT
- 7. CONCRETE PILE
- 8. VENTILATION BLOCK
- 9. L-SHAPE RETAINING WALL
- 10. MANHOLE COVER

- 11. ROAD BARRIER
- 12. IBS CONCRETE FENCING
- 13. CONCRETE SLAB
- 14. R.C. OPEN DRAINS
- 15. CONCRETE BOLLARD



HARDWARE SHOP

Sand or Aggregate Storage

Project Reference

INDUSTRIAL PROJECT



Kanthan Industry
Chemor, Perak



Simpang Pulai
Perak



Chemor
Perak



TungZen Industrial Park
Perak



Sungai Siput
Perak



Manong, Kuala Kangsar
Perak

RESIDENTIAL PROJECT



Taman SPPK
Ipoh, Perak



Taman Gemilang
Seri Iskandar, Perak



Bandar Universiti
Seri Iskandar, Perak

HARDWARE SHOP



Kuala Pilah
Negeri Sembilan



Ayer Tawar
Perak



LTH GROUP HOLDINGS SDN BHD

Headquarter

PT 14469, Psrn Batu Gajah Perdana 2,
Kaw. Perindustrian BG Perdana,
31000 Batu Gajah, Perak.

Manufacturing Site

Perak

- 📍 PT 145810, Lebuhraya Ipoh-Lumut,
31750 Tronoh, Perak.
- 📍 LOT 18246, Jalan Simpang Pulau-Lahat,
31300 Ipoh, Perak.

Melaka

- 📍 PT 1450 & 1451, Kaw. Perindustrian,
Masjid Tanah Daerah Alor Gajah,
78300 Masjid Tanah, Melaka.

Selangor

- 📍 Lot 4478, Jalan Meru Tambahan,
42200 Kapar, Selangor.

INNOVATIVE BUILDING MATERIALS SPECIALIST

05-365 3686 📞

info@lthgroup.net ✉

www.lthgroup.net 🌐